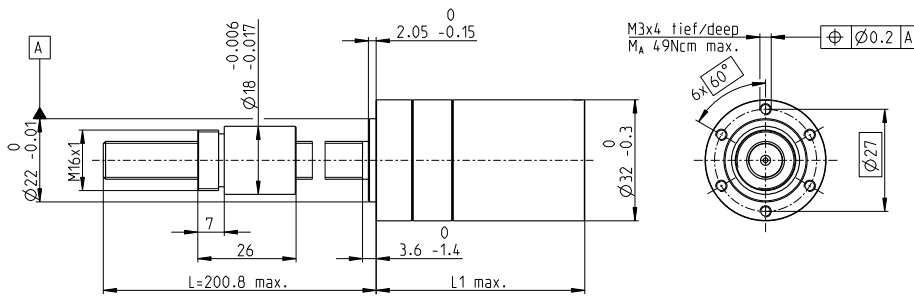


# Screw Drive GP 32 S $\varnothing 32$ mm, metric lead screw



M 1:2

## Technical Data

Screw	M10 x1, stainless steel
Standard length	200.8 mm
Special length (5 mm steps)	max. 600 mm
Nut (standard)	thread nut
Material	bronze
Axial play	< 0.008 mm
Planetary gearhead	straight teeth
Bearing	ball bearing/thrust roller bearing
Radial play, 5 mm from flange	< 0.05 mm
Axial play	preloaded
Max. continuous input speed <sup>2</sup>	8000 rpm
Recommended temperature range	-15...+80°C
Max. axial load (static) <sup>1</sup>	2700 N
Number of stages	0 1 2 3 4
Max. radial load,	
15 mm from flange	200 N 200 N 350 N 400 N 400 N

screw drive

- Stock program
- Standard program
- Special program (on request)

## Part Numbers

Screw Drive Data	363900	363901	363904	363909	363910	363915	363920	363925	363930
1 Reduction	1:1	3.7:1	14:1	33:1	51:1	111:1	246:1	492:1	762:1
2 Absolute reduction	1/1	26/7	676/49	529/16	17576/343	13824/125	421824/1715	86112/175	19044/25
20 Max. feed velocity <sup>1</sup>	mm/s 100	36	9.5	4.0	2.6	1.2	0.5	0.3	0.2
21 Max. feed force (continuous) <sup>1</sup>	N 183	257	400	533	616	798	1040	1311	1350
22 Max. feed force (intermittent) <sup>1</sup>	N 455	638	995	1324	1350	1350	1350	1350	1350
<b>Part Numbers</b>		<b>363902</b>	<b>363905</b>		<b>363911</b>	<b>363916</b>	<b>363921</b>	<b>363926</b>	<b>363931</b>
1 Reduction		4.8:1	18:1		66:1	123:1	295:1	531:1	913:1
2 Absolute reduction		24/5	624/35		16224/245	687/56	101062/343	331776/625	36501/40
20 Max. feed velocity <sup>1</sup>	mm/s	28	7.4		2.0	1.1	0.5	0.3	0.1
21 Max. feed force (continuous) <sup>1</sup>	N	280	435		671	826	1105	1345	1350
22 Max. feed force (intermittent) <sup>1</sup>	N	696	1082		1350	1350	1350	1350	1350
<b>Part Numbers</b>		<b>363903</b>	<b>363906</b>		<b>363912</b>	<b>363917</b>	<b>363922</b>	<b>363927</b>	<b>363932</b>
1 Reduction		5.8:1	21:1		79:1	132:1	318:1	589:1	1093:1
2 Absolute reduction		23/4	299/14		3887/49	3312/25	389376/1225	20631/35	279841/256
20 Max. feed velocity <sup>1</sup>	mm/s	23	6.3		1.7	1.0	0.4	0.2	0.1
21 Max. feed force (continuous) <sup>1</sup>	N	298	458		712	845	1133	1350	1350
22 Max. feed force (intermittent) <sup>1</sup>	N	742	1139		1350	1350	1350	1350	1350
<b>Part Numbers</b>			<b>363907</b>		<b>363913</b>	<b>363918</b>	<b>363923</b>	<b>363928</b>	
1 Reduction			23:1		86:1	159:1	411:1	636:1	
2 Absolute reduction			576/25		14976/175	1587/10	359424/675	79488/125	
20 Max. feed velocity <sup>1</sup>	mm/s		5.8		1.6	0.8	0.3	0.2	
21 Max. feed force (continuous) <sup>1</sup>	N		472		733	899	1234	1350	
22 Max. feed force (intermittent) <sup>1</sup>	N		1174		1350	1350	1350	1350	
<b>Part Numbers</b>			<b>363908</b>		<b>363914</b>	<b>363919</b>	<b>363924</b>	<b>363929</b>	
1 Reduction			28:1		103:1	190:1	456:1	706:1	
2 Absolute reduction			138/5		3588/35	12167/64	89401/196	158171/224	
20 Max. feed velocity <sup>1</sup>	mm/s		4.8		1.3	0.7	0.3	0.2	
21 Max. feed force (continuous) <sup>1</sup>	N		504		778	955	1278	1350	
22 Max. feed force (intermittent) <sup>1</sup>	N		1253		1350	1350	1350	1350	
4 Number of stages		0	1	2	2	3	3	4	4
7 Max. efficiency gearhead incl. screw	%	27	22	20	20	19	19	16	16
8 Weight <sup>1</sup>	g	304	304	331	331	359	359	387	387
9 Average backlash no load	°	0.7	0.7	0.8	0.8	1.0	1.0	1.0	1.0
23 Mechanical positioning accuracy <sup>1</sup>	mm	0.033	0.033	0.033	0.033	0.034	0.034	0.034	0.034
10 Mass inertia gearhead incl. screw <sup>1</sup>	gcm <sup>2</sup>	43.3	3.0	0.9	0.9	0.7	0.7	0.7	0.7
11 Gearhead length L1	mm	51.0	51.0	57.7	57.7	64.4	64.4	71.1	71.1

<sup>1</sup> based on screw length 200.8 mm (standard length)    <sup>2</sup> for reduction 1:1 = 5984 rpm

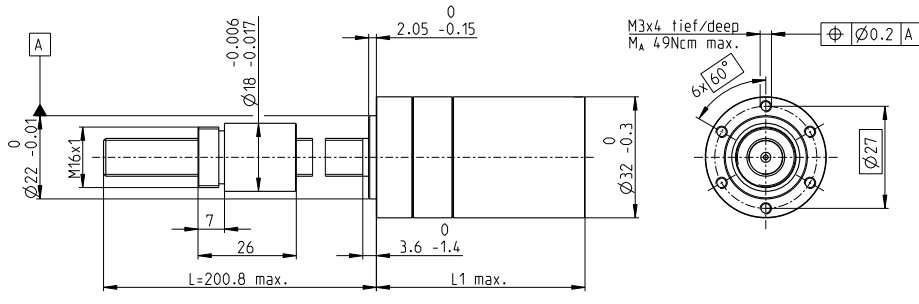


## maxon Modular System

+ Motor	Page	+ Sensor/Brake	Page	Overall length [mm] = Motor length + gearhead length + (sensor/brake) + assembly parts								
RE 25	144/146			105.6	105.6	112.3	112.3	119.0	119.0	125.7	125.7	125.7
RE 25	144/146	MR	478	116.6	116.6	123.3	123.3	130.0	130.0	136.7	136.7	136.7
RE 25	144/146	Enc 22	483	119.7	119.7	126.4	126.4	133.1	133.1	139.8	139.8	139.8
RE 25	144/146	HED_5540	486/488	126.4	126.4	133.1	133.1	139.8	139.8	146.5	146.5	146.5
RE 25	144/146	DCT 22	495	127.9	127.9	134.6	134.6	141.3	141.3	148.0	148.0	148.0
RE 25, 20 W	145			94.1	94.1	100.8	100.8	107.5	107.5	114.2	114.2	114.2
RE 25, 20 W	145	MR	478	105.1	105.1	111.8	111.8	118.5	118.5	125.2	125.2	125.2
RE 25, 20 W	145	HED_5540	486/488	114.9	114.9	121.6	121.6	128.3	128.3	135.0	135.0	135.0
RE 25, 20 W	145	DCT 22	495	116.4	116.4	123.1	123.1	129.8	129.8	136.5	136.5	136.5
RE 25, 20 W	145	AB 28	535	128.2	128.2	134.9	134.9	141.6	141.6	148.3	148.3	148.3
RE 25, 20 W	145	HED_5540/AB 28	486/535	145.4	145.4	152.1	152.1	158.8	158.8	165.5	165.5	165.5
RE 25, 20 W	146	AB 28	535	139.7	139.7	146.4	146.4	153.1	153.1	159.8	159.8	159.8
RE 25, 20 W	146	HED_5540/AB 28	486/535	156.9	156.9	163.6	163.6	170.3	170.3	177.0	177.0	177.0
RE 30, 60 W	148			119.1	119.1	125.8	125.8	132.5	132.5	139.2	139.2	139.2
RE 30, 60 W	148	MR	479	130.5	130.5	137.2	137.2	143.9	143.9	150.6	150.6	150.6
RE 30, 60 W	148	HED_5540	486/488	139.9	139.9	146.6	146.6	153.3	153.3	160.0	160.0	160.0

# Screw Drive GP 32 S $\varnothing 32$ mm, metric lead screw

screw drive



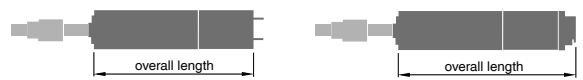
### Technical Data

Screw	M10 x 1, stainless steel
Standard length	200.8 mm
Special length (5 mm steps)	max. 600 mm
Nut (standard)	thread nut
Material	bronze
Axial play	< 0.008 mm
Planetary gearhead	straight teeth
Bearing	ball bearing/thrust roller bearing
Radial play, 5 mm from flange	< 0.05 mm
Axial play	preloaded
Max. continuous input speed <sup>2</sup>	8000 rpm
Recommended temperature range	-15...+80°C
Max. axial load (static) <sup>1</sup>	2700 N
Number of stages	0 1 2 3 4
Max. radial load,	
15 mm from flange	200 N 200 N 350 N 400 N 400 N

M 1:2

- Stock program
- Standard program
- Special program (on request)

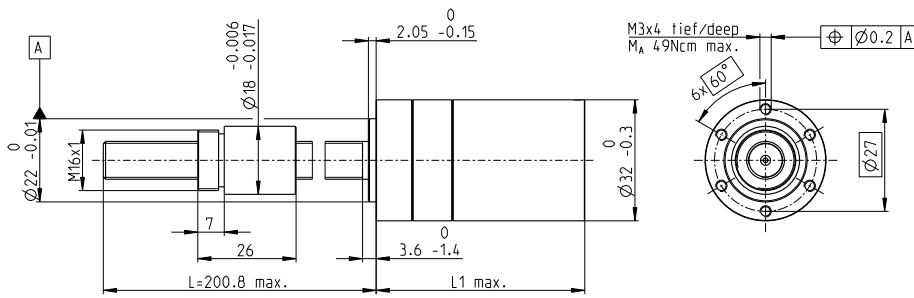
Part Numbers								
363900	363901	363904	363909	363910	363915	363920	363925	363930
	363902	363905		363911	363916	363921	363926	363931
	363903	363906		363912	363917	363922	363927	363932
		363907		363913	363918	363923	363928	
		363908		363914	363919	363924	363929	



### maxon Modular System

+ Motor	Page	+ Sensor/Brake	Page	Overall length [mm] = Motor length + gearhead length + (sensor/brake) + assembly parts								
RE 35, 90 W	149			122.1	122.1	128.8	128.8	135.5	135.5	142.2	142.2	142.2
RE 35, 90 W	149	MR	479	133.5	133.5	140.2	140.2	146.9	146.9	153.6	153.6	153.6
RE 35, 90 W	149	HED_5540	486/488	142.8	142.8	149.5	149.5	156.2	156.2	162.9	162.9	162.9
RE 35, 90 W	149	DCT 22	495	140.2	140.2	146.9	146.9	153.6	153.6	160.3	160.3	160.3
RE 35, 90 W	149	AB 28	535	158.2	158.2	164.9	164.9	171.6	171.6	178.3	178.3	178.3
RE 35, 90 W	149	HEDS 5540/AB 28	486/535	175.4	175.4	182.1	182.1	188.8	188.8	195.5	195.5	195.5
A-max 26	174			-	95.8	102.5	102.5	109.2	109.2	115.9	115.9	115.9
A-max 26	174	MR	478	-	104.6	111.3	111.3	118.0	118.0	124.7	124.7	124.7
A-max 26	174	Enc 22	483	-	110.2	116.9	116.9	123.6	123.6	130.3	130.3	130.3
A-max 26	174	HED_5540	487/489	-	114.2	120.9	120.9	127.6	127.6	134.3	134.3	134.3
A-max 32	175			-	114.0	120.7	120.7	127.4	127.4	134.1	134.1	134.1
A-max 32	176			-	112.6	119.3	119.3	126.0	126.0	132.7	132.7	132.7
A-max 32	176	MR	479	-	123.8	130.5	130.5	137.2	137.2	143.9	143.9	143.9
A-max 32	176	HED_5540	486/488	-	133.4	140.1	140.1	146.8	146.8	153.5	153.5	153.5
EC 32, 80 W	238			111.1	111.1	117.8	117.8	124.5	124.5	131.2	131.2	131.2
EC 32, 80 W	238	HED_5540	486/488	129.5	129.5	136.2	136.2	142.9	142.9	149.6	149.6	149.6
EC 32, 80 W	238	Res 26	496	131.2	131.2	137.9	137.9	144.6	144.6	151.3	151.3	151.3
EC-max 22, 25 W	249			-	99.6	106.3	106.3	113.0	113.0	119.7	119.7	119.7
EC-max 22, 25 W	249	MR	479	-	109.2	115.9	115.9	122.6	122.6	129.3	129.3	129.3
EC-max 22, 25 W	249	AB 20	430	-	135.2	141.9	141.9	148.6	148.6	155.3	155.3	155.3
EC-max 30, 40 W	250			-	93.1	99.8	99.8	106.5	106.5	113.2	113.2	113.2
EC-max 30, 40 W	250	MR	479	-	105.3	112.0	112.0	118.7	118.7	125.4	125.4	125.4
EC-max 30, 40 W	250	HEDL 5540	489	-	113.7	120.4	120.4	127.1	127.1	133.8	133.8	133.8
EC-max 30, 40 W	250	AB 20	430	-	128.7	135.4	135.4	142.1	142.1	148.8	148.8	148.8
EC-max 30, 40 W	250	HEDL 5540/AB 20	489/430	-	149.3	156.0	156.0	162.7	162.7	169.4	169.4	169.4
EC-max 30, 60 W	251			115.1	115.1	121.8	121.8	128.5	128.5	135.2	135.2	135.2
EC-max 30, 60 W	251	MR	478	127.3	127.3	134.0	134.0	140.7	140.7	147.4	147.4	147.4
EC-max 30, 60 W	251	HEDL 5540	490	135.7	135.7	142.4	142.4	149.1	149.1	155.8	155.8	155.8
EC-max 30, 60 W	251	AB 20	430	150.7	150.7	157.4	157.4	164.1	164.1	170.8	170.8	170.8
EC-max 30, 60 W	251	HEDL 5540/AB 20	490/430	171.3	171.3	178.0	178.0	184.7	184.7	191.4	191.4	191.4
EC-4pole 22, 90 W	257			99.7	99.7	106.4	106.4	113.1	113.1	119.8	119.8	119.8
EC-4pole 22, 90 W	257	22 EMT	457	125.5	125.5	132.2	132.2	138.9	138.9	145.6	145.6	145.6
EC-4pole 22, 90 W	257	16 EASY/XT/Abs.	464-468	111.9	111.9	118.6	118.6	125.3	125.3	132.0	132.0	132.0
EC-4pole 22, 90 W	257	16 EASY Abs. XT	470	112.4	112.4	119.1	119.1	125.8	125.8	132.5	132.5	132.5
EC-4pole 22, 90 W	257	16 RIO	481	110.4	110.4	117.1	117.1	123.8	123.8	130.5	130.5	130.5
EC-4pole 22, 90 W	257	AEDL/HEDL	484/490	121.2	121.2	127.9	127.9	134.6	134.6	141.3	141.3	141.3
EC-4pole 22, 120 W	258			117.1	117.1	123.8	123.8	130.5	130.5	137.2	137.2	137.2
EC-4pole 22, 120 W	258	22 EMT	457	142.9	142.9	149.6	149.6	156.3	156.3	163.0	163.0	163.0
EC-4pole 22, 120 W	258	16 EASY/XT/Abs.	464-468	129.3	129.3	136.0	136.0	142.7	142.7	149.4	149.4	149.4
EC-4pole 22, 120 W	258	16 EASY Abs. XT	470	129.8	129.8	136.5	136.5	143.2	143.2	149.9	149.9	149.9
EC-4pole 22, 120 W	258	16 RIO	481	127.8	127.8	134.5	134.5	141.2	141.2	147.9	147.9	147.9
EC-4pole 22, 120 W	258	AEDL/HEDL	484/490	138.6	138.6	145.3	145.3	152.0	152.0	158.7	158.7	158.7

# Screw Drive GP 32 S $\varnothing 32$ mm, metric lead screw



## Technical Data

Screw	M10 x1, stainless steel
Standard length	200.8 mm
Special length (5 mm steps)	max. 600 mm
Nut (standard)	thread nut
Material	bronze
Axial play	< 0.008 mm
Planetary gearhead	straight teeth
Bearing	ball bearing/thrust roller bearing
Radial play, 5 mm from flange	< 0.05 mm
Axial play	preloaded
Max. continuous input speed <sup>2</sup>	8000 rpm
Recommended temperature range	-15...+80°C
Max. axial load (static) <sup>1</sup>	2700 N
Number of stages	0 1 2 3 4
Max. radial load,	
15 mm from flange	200 N 200 N 350 N 400 N 400 N

screw drive

M 1:2

- Stock program
- Standard program
- Special program (on request)

## Part Numbers

363900	363901	363904	363909	363910	363915	363920	363925	363930
	363902	363905		363911	363916	363921	363926	363931
	363903	363906		363912	363917	363922	363927	363932
		363907		363913	363918	363923	363928	
		363908		363914	363919	363924	363929	



## maxon Modular System

+ Motor	Page	+ Sensor/Brake	Page	Overall length [mm] = Motor length + gearhead length + (sensor/brake) + assembly parts								
EC-4pole 30, 100 W	259			98.1	98.1	104.8	104.8	111.5	111.5	118.2	118.2	118.2
EC-4pole 30, 100 W	259	16 EASY/XT/Abs.	464-468	112.0	112.0	118.7	118.7	125.4	125.4	132.1	132.1	132.1
EC-4pole 30, 100 W	259	16 EASY Abs. XT	470	112.5	112.5	119.2	119.2	125.9	125.9	132.6	132.6	132.6
EC-4pole 30, 100 W	259	22 EMT	457	126.0	126.0	132.7	132.7	139.4	139.4	146.1	146.1	146.1
EC-4pole 30, 100 W	259	16 RIO	481	110.5	110.5	117.2	117.2	123.9	123.9	130.6	130.6	130.6
EC-4pole 30, 100 W	259	AEDL/HEDL	484/490	118.7	118.7	125.4	125.4	132.1	132.1	138.8	138.8	138.8
EC-4pole 30, 100 W	259	AB 20	430	134.3	134.3	141.0	141.0	147.7	147.7	154.4	154.4	154.4
EC-4pole 30, 100 W	259	16 EASY/XT/Abs./AB 20	464/430	148.4	148.4	155.1	155.1	161.8	161.8	168.5	168.5	168.5
EC-4pole 30, 100 W	259	16 EASY Abs. XT/AB 20	470/430	148.9	148.9	155.6	155.6	162.3	162.3	169.0	169.0	169.0
EC-4pole 30, 100 W	259	22 EMT/AB 20	457/430	165.5	165.5	172.2	172.2	178.9	178.9	185.6	185.6	185.6
EC-4pole 30, 100 W	259	16 RIO/AB 20	481/430	146.9	146.9	153.6	153.6	160.3	160.3	167.0	167.0	167.0
EC-4pole 30, 100 W	259	AEDL/HEDL/AB 20	484/430	154.9	154.9	161.6	161.6	168.3	168.3	175.0	175.0	175.0
EC-4pole 30, 200 W	261			115.1	115.1	121.8	121.8	128.5	128.5	135.2	135.2	135.2
EC-4pole 30, 200 W	261	16 EASY/XT/Abs.	464-468	129.0	129.0	135.7	135.7	142.4	142.4	149.1	149.1	149.1
EC-4pole 30, 200 W	261	16 EASY Abs. XT	470	129.5	129.5	136.2	136.2	142.9	142.9	149.6	149.6	149.6
EC-4pole 30, 200 W	261	22 EMT	457	143.0	143.0	149.7	149.7	156.4	156.4	163.1	163.1	163.1
EC-4pole 30, 200 W	261	16 RIO	481	127.5	127.5	134.2	134.2	140.9	140.9	147.6	147.6	147.6
EC-4pole 30, 200 W	261	AEDL/HEDL	484/490	135.7	135.7	142.4	142.4	149.1	149.1	155.8	155.8	155.8
EC-4pole 30, 200 W	261	AB 20	430	151.3	151.3	158.0	158.0	164.7	164.7	171.4	171.4	171.4
EC-4pole 30, 200 W	261	16 EASY/XT/Abs./AB 20	464/430	165.4	165.4	172.1	172.1	178.8	178.8	185.5	185.5	185.5
EC-4pole 30, 200 W	261	16 EASY Abs. XT/AB 20	470/430	165.9	165.9	172.6	172.6	179.3	179.3	186.0	186.0	186.0
EC-4pole 30, 200 W	261	22 EMT/AB 20	457/430	182.5	182.5	189.2	189.2	195.9	195.9	202.6	202.6	202.6
EC-4pole 30, 200 W	261	16 RIO/AB 20	481/430	163.9	163.9	170.6	170.6	177.3	177.3	184.0	184.0	184.0
EC-4pole 30, 200 W	261	AEDL/HEDL/AB 20	484/430	171.9	171.9	178.6	178.6	185.3	185.3	192.0	192.0	192.0
EC-i 30, 30 W	268			93.3	93.3	100.0	100.0	106.7	106.7	113.4	113.4	113.4
EC-i 30, 30 W	268	16 EASY/Abs.	464-468	105.0	105.0	111.7	111.7	118.4	118.4	125.1	125.1	125.1
EC-i 30, 30 W	268	16 RIO	481	103.5	103.5	110.2	110.2	116.9	116.9	123.6	123.6	123.6
EC-i 30, 30 W	268	AEDL/HEDL	484/489	114.0	114.0	120.7	120.7	127.4	127.4	134.1	134.1	134.1
EC-i 30, 45 W	269			93.3	93.3	100.0	100.0	106.7	106.7	113.4	113.4	113.4
EC-i 30, 45 W	269	16 EASY/Abs.	464-468	105.0	105.0	111.7	111.7	118.4	118.4	125.1	125.1	125.1
EC-i 30, 45 W	269	16 RIO	481	103.5	103.5	110.2	110.2	116.9	116.9	123.6	123.6	123.6
EC-i 30, 45 W	269	AEDL/HEDL	484/489	114.0	114.0	120.7	120.7	127.4	127.4	134.1	134.1	134.1
EC-i 30, 50 W	270			115.3	115.3	122.0	122.0	128.7	128.7	135.4	135.4	135.4
EC-i 30, 50 W	270	16 EASY/Abs.	464-468	127.0	127.0	133.7	133.7	140.4	140.4	147.1	147.1	147.1
EC-i 30, 50 W	270	16 RIO	481	125.5	125.5	132.2	132.2	138.9	138.9	145.6	145.6	145.6
EC-i 30, 50 W	270	AEDL/HEDL	484/489	136.0	136.0	142.7	142.7	149.4	149.4	156.1	156.1	156.1
EC-i 30, 75 W	271			115.3	115.3	122.0	122.0	128.7	128.7	135.4	135.4	135.4
EC-i 30, 75 W	271	16 EASY/Abs.	464-468	127.0	127.0	133.7	133.7	140.4	140.4	147.1	147.1	147.1
EC-i 30, 75 W	271	16 RIO	481	125.5	125.5	132.2	132.2	138.9	138.9	145.6	145.6	145.6
EC-i 30, 75 W	271	AEDL/HEDL	484/489	136.0	136.0	142.7	142.7	149.4	149.4	156.1	156.1	156.1
EC-i 40, 50 W	272			82.7	82.7	89.4	89.4	96.1	96.1	102.8	102.8	102.8
EC-i 40, 50 W	272	16 EASY/Abs.	464-468	94.4	94.4	101.1	101.1	107.8	107.8	114.5	114.5	114.5
EC-i 40, 50 W	272	16 RIO	481	97.2	97.2	103.9	103.9	110.6	110.6	117.3	117.3	117.3
EC-i 40, 50 W	272	AEDL/HEDL	484/489	105.7	105.7	112.4	112.4	119.1	119.1	125.8	125.8	125.8
EC-i 40, 70 W	274			92.7	92.7	99.4	99.4	106.1	106.1	112.8	112.8	112.8
EC-i 40, 70 W	274	16 EASY/Abs.	464-468	104.4	104.4	111.1	111.1	117.8	117.8	124.5	124.5	124.5
EC-i 40, 70 W	274	16 RIO	481	107.2	107.2	113.9	113.9	120.6	120.6	127.3	127.3	127.3
EC-i 40, 70 W	274	AEDL/HEDL	484/489	115.7	115.7	122.4	122.4	129.1	129.1	135.8	135.8	135.8