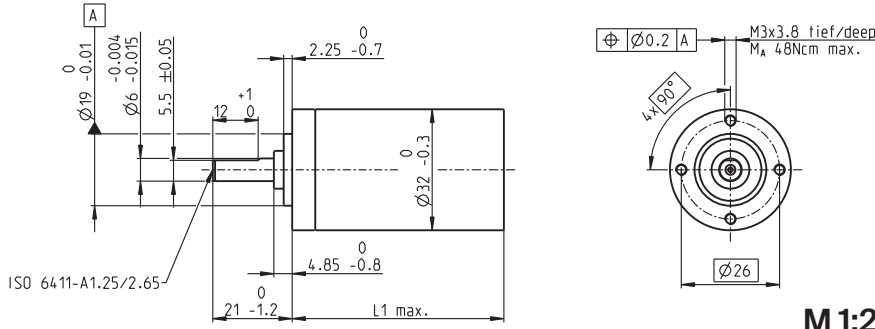


行星齿轮减速机 GP 32 C Ø32 mm, 1.0-6.0 Nm

陶瓷版

gear



技术参数

| | |
|-------------------|------------------------------|
| 行星齿轮减速机 | 直齿 |
| 输出轴 | 不锈钢 |
| 轴径可选项 | 8 mm |
| 输出端轴承 | 滚珠轴承 |
| 径向间隙, 距法兰5 mm | 最大0.14 mm |
| 轴向间隙 | 最大0.4 mm |
| 最大轴向载荷 (动态) | 120 N |
| 最大允许安装力 | 120 N |
| 输入输出旋转方向 | = |
| 最大连续输入转速 | 8000 rpm |
| 推荐的温度范围 | -40...+100°C |
| 级数 | 1 2 3 4 5 |
| 最大径向载荷, 距法兰10 mm处 | 90 N 140 N 200 N 220 N 220 N |

M 1:2

选项 低噪音版本

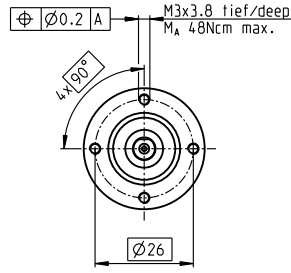
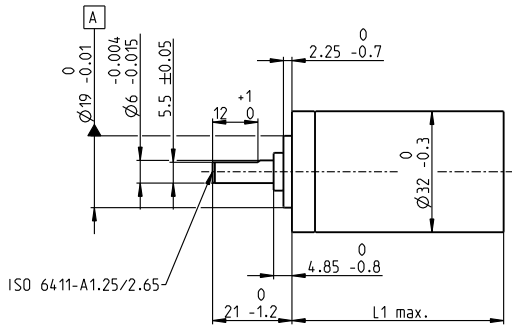
| 库存零件系列 标准系列 特殊系列(按客户要求) | 零件号 | | | | | | | | | | | |
|-------------------------------|--------|--------|--------|-----------|-----------|-------------|------------|------------|---------------|--------------|-------------|--------------|
| | 166930 | 166933 | 166938 | 166939 | 166944 | 166949 | 166954 | 166959 | 166962 | 166967 | 166972 | 166977 |
| 减速箱参数 | | | | | | | | | | | | |
| 1 减速比 | 3.7:1 | 14:1 | 33:1 | 51:1 | 111:1 | 246:1 | 492:1 | 762:1 | 1181:1 | 1972:1 | 2829:1 | 4380:1 |
| 2 精确减速比 | 26/7 | 676/49 | 529/16 | 17576/343 | 13824/125 | 421824/1715 | 86112/175 | 19044/25 | 10123776/6575 | 8626176/4375 | 495144/175 | 109503/25 |
| 3 最大电机轴直径 mm | 6 | 6 | 3 | 6 | 4 | 4 | 3 | 3 | 4 | 4 | 3 | 3 |
| 零件号 | 166931 | 166934 | | 166940 | 166945 | 166950 | 166955 | 166960 | 166963 | 166968 | 166973 | 166978 |
| 1 减速比 | 4.8:1 | 18:1 | | 66:1 | 123:1 | 295:1 | 531:1 | 913:1 | 1414:1 | 2189:1 | 3052:1 | 5247:1 |
| 2 精确减速比 | 24/5 | 624/35 | | 16224/245 | 6877/56 | 101062/343 | 331776/625 | 36501/40 | 2425488/1715 | 536406/245 | 1907712/625 | 839523/160 |
| 3 最大电机轴直径 mm | 4 | 4 | | 4 | 3 | 3 | 4 | 3 | 3 | 3 | 3 | 3 |
| 零件号 | 166932 | 166935 | | 166941 | 166946 | 166951 | 166956 | 166961 | 166964 | 166969 | 166974 | 166979 |
| 1 减速比 | 5.8:1 | 21:1 | | 79:1 | 132:1 | 318:1 | 589:1 | 1093:1 | 1526:1 | 2362:1 | 3389:1 | 6285:1 |
| 2 精确减速比 | 23/4 | 299/14 | | 3887/49 | 3312/25 | 389376/1225 | 20631/35 | 279841/256 | 9345024/6125 | 2066688/875 | 474513/140 | 6436343/1024 |
| 3 最大电机轴直径 mm | 3 | 3 | | 3 | 3 | 4 | 3 | 3 | 4 | 3 | 3 | 3 |
| 零件号 | | 166936 | | 166942 | 166947 | 166952 | 166957 | | 166965 | 166970 | 166975 | |
| 1 减速比 | | 23:1 | | 86:1 | 159:1 | 411:1 | 636:1 | | 1694:1 | 2548:1 | 3656:1 | |
| 2 精确减速比 | | 576/25 | | 14976/175 | 1587/10 | 359424/675 | 79488/125 | | 1162213/686 | 7962624/3125 | 457056/125 | |
| 3 最大电机轴直径 mm | | 4 | | 4 | 3 | 4 | 3 | | 3 | 4 | 3 | |
| 零件号 | | 166937 | | 166943 | 166948 | 166953 | 166958 | | 166966 | 166971 | 166976 | |
| 1 减速比 | | 28:1 | | 103:1 | 190:1 | 456:1 | 706:1 | | 1828:1 | 2623:1 | 4060:1 | |
| 2 精确减速比 | | 138/5 | | 3586/35 | 12167/64 | 89401/196 | 158171/224 | | 2238911/1225 | 2056223/784 | 3637933/896 | |
| 3 最大电机轴直径 mm | | 3 | | 3 | 3 | 3 | 3 | | 3 | 3 | 3 | |
| 4 级数 | | 1 | 2 | 2 | 3 | 3 | 4 | 4 | 5 | 5 | 5 | 5 |
| 5 最大连续转矩 Nm | | 1 | 3 | 3 | 6 | 6 | 6 | 6 | 6 | 6 | 6 | 6 |
| 6 最大齿轮输出的瞬时转矩 Nm | | 1.25 | 3.75 | 3.75 | 7.5 | 7.5 | 7.5 | 7.5 | 7.5 | 7.5 | 7.5 | 7.5 |
| 7 最大效率* | | 80 | 75 | 75 | 70 | 70 | 60 | 60 | 50 | 50 | 50 | 50 |
| 8 重量 g | | 118 | 162 | 162 | 194 | 194 | 226 | 226 | 226 | 258 | 258 | 258 |
| 9 无载荷时的平均间隙 ° | | 0.7 | 0.8 | 0.8 | 1.0 | 1.0 | 1.0 | 1.0 | 1.0 | 1.0 | 1.0 | 1.0 |
| 10 转动惯量 gcm ² | | 1.5 | 0.8 | 0.8 | 0.7 | 0.7 | 0.7 | 0.7 | 0.7 | 0.7 | 0.7 | 0.7 |
| 11 减速机长度L1 mm | | 26.5 | 36.4 | 36.4 | 43.1 | 43.1 | 49.8 | 49.8 | 49.8 | 56.5 | 56.5 | 56.5 |



| maxon组合体系 | | | | | | | | | | | | |
|----------------------|-----|-----------------|---------|---|-------|-------|-------|-------|-------|-------|-------|-------|
| + 电机 | 页码 | + 编码器 / 制动器 | 页码 | 总长 [mm] = 电机长度 + 齿轮箱长度 + (编码器/制动器) + 组件 | | | | | | | | |
| EC 32, 80 W | 228 | | | 86.6 | 96.5 | 96.5 | 103.2 | 103.2 | 109.9 | 109.9 | 109.9 | 116.6 |
| EC 32, 80 W | 228 | HED_5540 | 472/475 | 105.0 | 114.9 | 114.9 | 121.6 | 121.6 | 128.3 | 128.3 | 128.3 | 135.0 |
| EC 32, 80 W | 228 | Res 26 | 481 | 106.7 | 116.6 | 116.6 | 123.3 | 123.3 | 130.0 | 130.0 | 130.0 | 136.7 |
| EC-max 22, 25 W | 239 | | | 75.1 | 85.0 | 85.0 | 91.7 | 91.7 | 98.4 | 98.4 | 98.4 | 105.1 |
| EC-max 22, 25 W | 239 | MR | 462 | 84.7 | 94.6 | 94.6 | 101.3 | 101.3 | 108.0 | 108.0 | 108.0 | 114.7 |
| EC-max 22, 25 W | 239 | AB 20 | 516 | 110.7 | 120.6 | 120.6 | 127.3 | 127.3 | 134.0 | 134.0 | 134.0 | 140.7 |
| EC-max 30, 40 W | 240 | | | 68.6 | 78.5 | 78.5 | 85.2 | 85.2 | 91.9 | 91.9 | 91.9 | 98.6 |
| EC-max 30, 40 W | 240 | MR | 463 | 80.8 | 90.7 | 90.7 | 97.4 | 97.4 | 104.1 | 104.1 | 104.1 | 110.8 |
| EC-max 30, 40 W | 240 | HEDL 5540 | 474 | 89.2 | 99.1 | 99.1 | 105.8 | 105.8 | 112.5 | 112.5 | 112.5 | 119.2 |
| EC-max 30, 40 W | 240 | AB 20 | 516 | 104.2 | 114.1 | 114.1 | 120.8 | 120.8 | 127.5 | 127.5 | 127.5 | 134.2 |
| EC-max 30, 40 W | 240 | HEDL 5540/AB 20 | 475/516 | 124.8 | 134.7 | 134.7 | 141.4 | 141.4 | 148.1 | 148.1 | 148.1 | 154.8 |
| EC-max 30, 60 W | 241 | | | 90.6 | 100.5 | 100.5 | 107.2 | 107.2 | 113.9 | 113.9 | 113.9 | 120.6 |
| EC-max 30, 60 W | 241 | MR | 463 | 102.8 | 112.7 | 112.7 | 119.4 | 119.4 | 126.1 | 126.1 | 126.1 | 132.8 |
| EC-max 30, 60 W | 241 | HEDL 5540 | 475 | 111.2 | 121.1 | 121.1 | 127.8 | 127.8 | 134.5 | 134.5 | 134.5 | 141.2 |
| EC-max 30, 60 W | 241 | AB 20 | 516 | 126.2 | 136.1 | 136.1 | 142.8 | 142.8 | 149.5 | 149.5 | 149.5 | 156.2 |
| EC-max 30, 60 W | 241 | HEDL 5540/AB 20 | 475/516 | 146.8 | 156.7 | 156.7 | 163.4 | 163.4 | 170.1 | 170.1 | 170.1 | 176.8 |
| EC-4pole 22, 90 W | 247 | | | 75.2 | 85.1 | 85.1 | 91.8 | 91.8 | 98.5 | 98.5 | 98.5 | 105.2 |
| EC-4pole 22, 90 W | 247 | 16 EASY/XT/Abs. | 449-453 | 87.4 | 97.3 | 97.3 | 104.0 | 104.0 | 110.7 | 110.7 | 110.7 | 117.4 |
| EC-4pole 22, 90 W | 247 | 16 EASY Abs. XT | 455 | 87.9 | 97.8 | 97.8 | 104.5 | 104.5 | 111.2 | 111.2 | 111.2 | 117.9 |
| EC-4pole 22, 90 W | 247 | 16 RIO | 466 | 85.9 | 95.8 | 95.8 | 102.5 | 102.5 | 109.2 | 109.2 | 109.2 | 115.9 |
| EC-4pole 22, 90 W | 247 | AEDL/HEDL | 469/475 | 96.7 | 106.6 | 106.6 | 113.3 | 113.3 | 120.0 | 120.0 | 120.0 | 126.7 |
| EC-4pole 22, 120 W | 248 | | | 92.6 | 102.5 | 102.5 | 109.2 | 109.2 | 115.9 | 115.9 | 115.9 | 122.6 |
| EC-4pole 22, 120 W | 248 | 16 EASY/XT/Abs. | 449-453 | 104.8 | 114.7 | 114.7 | 121.4 | 121.4 | 128.1 | 128.1 | 128.1 | 134.8 |
| EC-4pole 22, 120 W | 248 | 16 EASY Abs. XT | 455 | 105.3 | 115.3 | 115.3 | 121.9 | 121.9 | 128.6 | 128.6 | 128.6 | 135.3 |
| EC-4pole 22, 120 W | 248 | 16 RIO | 466 | 103.3 | 113.3 | 113.3 | 119.9 | 119.9 | 126.6 | 126.6 | 126.6 | 133.3 |
| EC-4pole 22, 120 W | 248 | AEDL/HEDL | 469/475 | 114.1 | 124.0 | 124.0 | 130.7 | 130.7 | 137.4 | 137.4 | 137.4 | 144.1 |
| EC 32 flat, 15 W | 282 | | | 44.5 | 54.4 | 54.4 | 61.1 | 61.1 | 67.8 | 67.8 | 67.8 | 74.5 |
| EC 32 flat IE, IP 00 | 283 | | | 54.6 | 64.5 | 64.5 | 71.2 | 71.2 | 77.9 | 77.9 | 77.9 | 84.6 |
| EC 32 flat IE, IP 40 | 283 | | | 56.3 | 66.2 | 66.2 | 72.9 | 72.9 | 79.6 | 79.6 | 79.6 | 86.3 |

行星齿轮减速机 GP 32 C $\varnothing 32$ mm, 1.0-6.0 Nm

陶瓷版



M 1:2

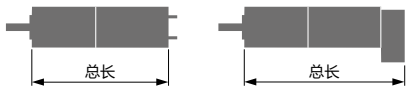
技术数据

| | |
|-------------------|------------------------------|
| 行星齿轮减速机 | 直齿 |
| 输出轴 | 不锈钢 |
| 轴径可选项 | 8 mm |
| 输出端轴承 | 滚珠轴承 |
| 径向间隙, 距法兰5 mm | 最大0.14 mm |
| 轴向间隙 | 最大0.4 mm |
| 最大轴向载荷 (动态) | 120 N |
| 最大允许安装力 | 120 N |
| 输入输出旋转方向 | = |
| 最大连续输入转速 | 8000 rpm |
| 推荐的工作温度范围 | -40...+100°C |
| 级数 | 1 2 3 4 5 |
| 最大径向载荷, 距法兰10 mm处 | 90 N 140 N 200 N 220 N 220 N |

选项 低噪音版本

gear

| 库存零件系列 标准系列 特殊系列(按客户要求) | 零件号 | | | | | | | | | | | |
|-------------------------------|----------------------|-----------|-----------|------------|-------------|--------------|--------------|--------------|---------------|--------------|--------------|-----------|
| | 166930 | 166933 | 166938 | 166939 | 166944 | 166949 | 166954 | 166959 | 166962 | 166967 | 166972 | 166977 |
| 减速机参数 | | | | | | | | | | | | |
| 1 减速比 | 3.7:1 | 14:1 | 33:1 | 51:1 | 111:1 | 246:1 | 492:1 | 762:1 | 1181:1 | 1972:1 | 2829:1 | 4380:1 |
| 2 精确减速比 | 26/7 | 676/49 | 529/16 | 17576/343 | 13824/125 | 421824/1715 | 86112/175 | 19044/25 | 10123776/8575 | 8626176/4375 | 495144/175 | 109503/25 |
| 3 最大电机轴直径 | 6 | 6 | 3 | 6 | 4 | 4 | 3 | 3 | 4 | 4 | 3 | 3 |
| 零件号 | 166931 | 166934 | 166940 | 166945 | 166950 | 166955 | 166960 | 166963 | 166968 | 166973 | 166978 | |
| 1 减速比 | 4.8:1 | 18:1 | 66:1 | 123:1 | 295:1 | 531:1 | 913:1 | 1414:1 | 2189:1 | 3052:1 | 5247:1 | |
| 2 精确减速比 | 24/5 | 624/35 | 16224/245 | 687/56 | 101062/343 | 331776/625 | 3650/40 | 2425488/1715 | 536406/245 | 1907712/625 | 839523/160 | |
| 3 最大电机轴直径 | 4 | 4 | 4 | 3 | 3 | 4 | 3 | 3 | 3 | 3 | 3 | |
| 零件号 | 166932 | 166935 | 166941 | 166946 | 166951 | 166956 | 166961 | 166964 | 166969 | 166974 | 166979 | |
| 1 减速比 | 5.8:1 | 21:1 | 79:1 | 132:1 | 318:1 | 589:1 | 1093:1 | 1526:1 | 2362:1 | 3389:1 | 6285:1 | |
| 2 精确减速比 | 23/4 | 299/14 | 3887/49 | 3312/25 | 389376/1225 | 2063/35 | 27984/256 | 9345024/6125 | 2066688/875 | 474513/140 | 6436343/1024 | |
| 3 最大电机轴直径 | 3 | 3 | 3 | 4 | 3 | 3 | 3 | 3 | 3 | 3 | 3 | |
| 零件号 | 166936 | 166942 | 166947 | 166952 | 166957 | 166965 | 166970 | 166975 | | | | |
| 1 减速比 | 23:1 | 86:1 | 159:1 | 411:1 | 636:1 | 1694:1 | 2548:1 | 3656:1 | | | | |
| 2 精确减速比 | 576/25 | 14976/175 | 1587/10 | 359424/875 | 79488/125 | 1162213/686 | 7962624/3125 | 457056/125 | | | | |
| 3 最大电机轴直径 | 4 | 4 | 3 | 4 | 3 | 3 | 4 | 3 | | | | |
| 零件号 | 166937 | 166943 | 166948 | 166953 | 166958 | 166966 | 166971 | 166976 | | | | |
| 1 减速比 | 28:1 | 103:1 | 190:1 | 456:1 | 706:1 | 1828:1 | 2623:1 | 4060:1 | | | | |
| 2 精确减速比 | 136/5 | 3589/35 | 12167/64 | 89401/96 | 15817/224 | 2238912/1225 | 2056223/784 | 3637933/696 | | | | |
| 3 最大电机轴直径 | 3 | 3 | 3 | 3 | 3 | 3 | 3 | 3 | | | | |
| 4 级数 | 1 | 2 | 2 | 3 | 3 | 4 | 4 | 5 | 5 | 5 | 5 | |
| 5 最大连续转矩 | Nm 1 | 3 | 3 | 6 | 6 | 6 | 6 | 6 | 6 | 6 | 6 | |
| 6 最大齿轮输出的瞬时转矩 | Nm 1.25 | 3.75 | 3.75 | 7.5 | 7.5 | 7.5 | 7.5 | 7.5 | 7.5 | 7.5 | 7.5 | |
| 7 最大效率* | % 80 | 75 | 75 | 70 | 70 | 60 | 60 | 60 | 50 | 50 | 50 | |
| 8 重量 | g 118 | 162 | 162 | 194 | 194 | 226 | 226 | 226 | 258 | 258 | 258 | |
| 9 无载荷时的平均间隙 | ° 0.7 | 0.8 | 0.8 | 1.0 | 1.0 | 1.0 | 1.0 | 1.0 | 1.0 | 1.0 | 1.0 | |
| 10 转动惯量 | gcm ² 1.5 | 0.8 | 0.8 | 0.7 | 0.7 | 0.7 | 0.7 | 0.7 | 0.7 | 0.7 | 0.7 | |
| 11 减速机长度L1 | mm 26.5 | 36.4 | 36.4 | 43.1 | 43.1 | 49.8 | 49.8 | 49.8 | 56.5 | 56.5 | 56.5 | |



| maxon组合体系 | | | | | | | | | | | | |
|---------------|-----|--------------|---------|---|-------|-------|-------|-------|-------|-------|-------|-------|
| + 电机 | 页码 | + 编码器 / 制动器 | 页码 | 总长 [mm] = 电机长度 + 齿轮箱长度 + (编码器/制动器) + 组件 | | | | | | | | |
| EC-i 30, 20 W | 257 | | | 68.6 | 78.5 | 78.5 | 85.2 | 85.2 | 91.9 | 91.9 | 91.9 | 98.6 |
| EC-i 30, 30 W | 258 | | | 68.8 | 78.7 | 78.7 | 85.4 | 85.4 | 92.1 | 92.1 | 92.1 | 98.8 |
| EC-i 30, 30 W | 258 | 16 EASY/Abs. | 449-453 | 80.5 | 90.4 | 90.4 | 97.1 | 97.1 | 103.8 | 103.8 | 103.8 | 110.5 |
| EC-i 30, 30 W | 258 | 16 RIO | 466 | 79.0 | 88.9 | 88.9 | 95.6 | 95.6 | 102.3 | 102.3 | 102.3 | 109.0 |
| EC-i 30, 30 W | 258 | AEDL/HEDL | 469/476 | 89.5 | 99.4 | 99.4 | 106.1 | 106.1 | 112.8 | 112.8 | 112.8 | 119.5 |
| EC-i 30, 45 W | 259 | | | 68.8 | 78.7 | 78.7 | 85.4 | 85.4 | 92.1 | 92.1 | 92.1 | 98.8 |
| EC-i 30, 45 W | 259 | 16 EASY/Abs. | 449-453 | 80.5 | 90.4 | 90.4 | 97.1 | 97.1 | 103.8 | 103.8 | 103.8 | 110.5 |
| EC-i 30, 45 W | 259 | 16 RIO | 466 | 79.0 | 88.9 | 88.9 | 95.6 | 95.6 | 102.3 | 102.3 | 102.3 | 109.0 |
| EC-i 30, 45 W | 259 | AEDL/HEDL | 469/476 | 89.5 | 99.4 | 99.4 | 106.1 | 106.1 | 112.8 | 112.8 | 112.8 | 119.5 |
| EC-i 30, 50 W | 260 | | | 90.8 | 100.7 | 100.7 | 107.4 | 107.4 | 114.1 | 114.1 | 114.1 | 120.8 |
| EC-i 30, 50 W | 260 | 16 EASY/Abs. | 450-454 | 102.5 | 112.4 | 112.4 | 119.1 | 119.1 | 125.8 | 125.8 | 125.8 | 132.5 |
| EC-i 30, 50 W | 260 | 16 RIO | 467 | 101.0 | 110.9 | 110.9 | 117.6 | 117.6 | 124.3 | 124.3 | 124.3 | 131.0 |
| EC-i 30, 50 W | 260 | AEDL/HEDL | 469/476 | 111.5 | 121.4 | 121.4 | 128.1 | 128.1 | 134.8 | 134.8 | 134.8 | 141.5 |
| EC-i 30, 75 W | 261 | | | 90.8 | 100.7 | 100.7 | 107.4 | 107.4 | 114.1 | 114.1 | 114.1 | 120.8 |
| EC-i 30, 75 W | 261 | 16 EASY/Abs. | 450-454 | 102.5 | 112.4 | 112.4 | 119.1 | 119.1 | 125.8 | 125.8 | 125.8 | 132.5 |
| EC-i 30, 75 W | 261 | 16 RIO | 467 | 101.0 | 110.9 | 110.9 | 117.6 | 117.6 | 124.3 | 124.3 | 124.3 | 131.0 |
| EC-i 30, 75 W | 261 | AEDL/HEDL | 469/476 | 111.5 | 121.4 | 121.4 | 128.1 | 128.1 | 134.8 | 134.8 | 134.8 | 141.5 |
| EC-i 40, 50 W | 262 | | | 58.3 | 68.2 | 68.2 | 74.9 | 74.9 | 81.6 | 81.6 | 81.6 | 88.3 |
| EC-i 40, 50 W | 262 | 16 EASY/Abs. | 450-454 | 70.0 | 79.9 | 79.9 | 86.6 | 86.6 | 93.3 | 93.3 | 93.3 | 100.0 |
| EC-i 40, 50 W | 262 | 16 RIO | 467 | 72.8 | 82.7 | 82.7 | 89.4 | 89.4 | 96.1 | 96.1 | 96.1 | 102.8 |
| EC-i 40, 50 W | 262 | AEDL/HEDL | 470/477 | 81.3 | 91.2 | 91.2 | 97.9 | 97.9 | 104.6 | 104.6 | 104.6 | 111.3 |
| EC-i 40, 70 W | 264 | | | 68.3 | 78.2 | 78.2 | 84.9 | 84.9 | 91.6 | 91.6 | 91.6 | 98.3 |
| EC-i 40, 70 W | 264 | 16 EASY/Abs. | 450-454 | 80.0 | 89.9 | 89.9 | 96.6 | 96.6 | 103.3 | 103.3 | 103.3 | 110.0 |
| EC-i 40, 70 W | 264 | 16 RIO | 467 | 82.8 | 92.7 | 92.7 | 99.4 | 99.4 | 106.1 | 106.1 | 106.1 | 112.8 |
| EC-i 40, 70 W | 264 | AEDL/HEDL | 470/477 | 91.3 | 101.2 | 101.2 | 107.9 | 107.9 | 114.6 | 114.6 | 114.6 | 121.3 |